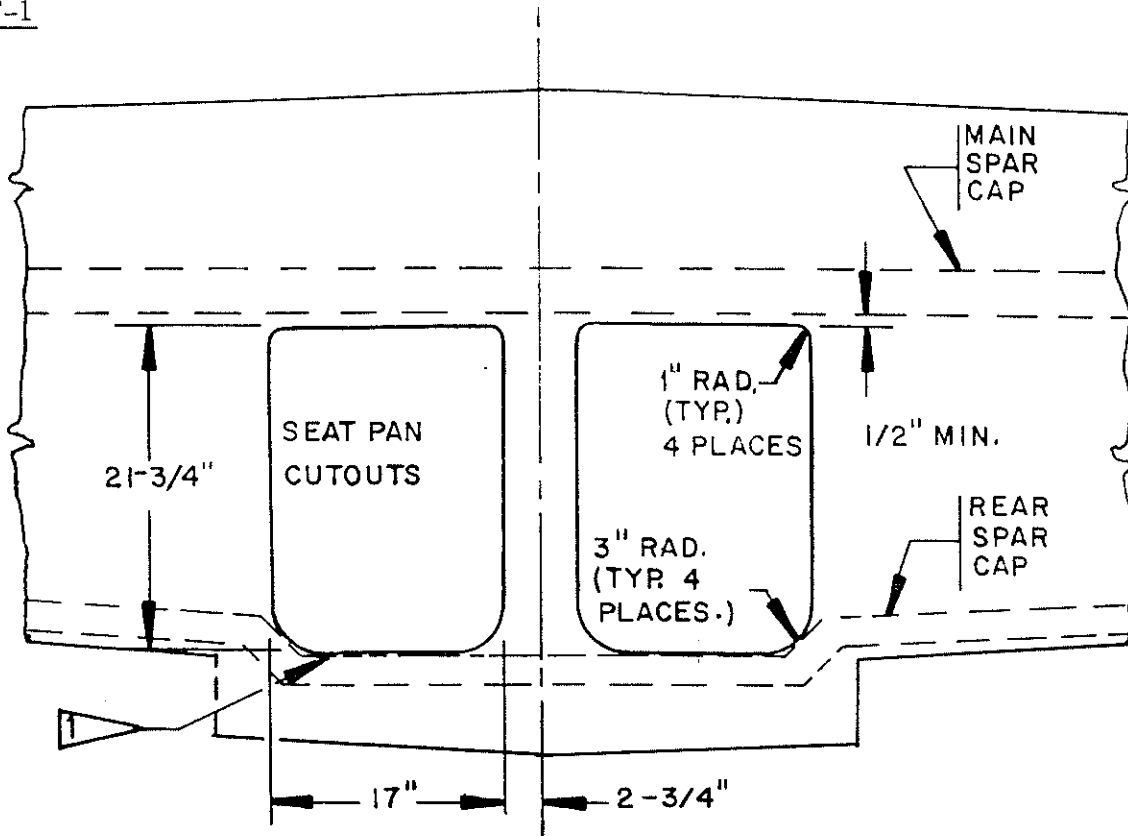


F. SEAT PAN CUT-OUTS

STEP F-1



*8-17.5  
check scribe lines*

FIGURE (C-18)

The seat pan cutouts are marked by a scribe line on the upper surface of the left and right upper wing panels. At the outboard rear corner of the seat pan cutout, the cutout should be flush against the upper rear spar cap, as shown by Flag # 1 in FIGURE (C-18). The scribe line is a starting point for the cutout. It may be necessary to extend the cutout further aft to properly fit the seat pan. Do not cut into the rear spar cap.

**CAUTION:** The upper rear spar caps are made from a thick laminate of unidirectional roving and are already pre-laminated onto the inside surface of the upper wing panels. Do not confuse the edge of the rear spar caps with the rear spar shearweb.

STEP F-2

Using a saber saw, cut out the holes for the seat pans in the upper panels only.

*8-17.5*

COMPLETED



MODEL	ASSEMBLY NAME	REVISION	DATE	VOLUME	PAGE
GLASAIR II	RG WING ASSEMBLY	B	6/15/88	I	C-25